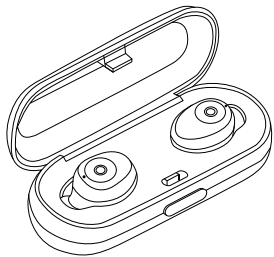


iQ Podz™ 05



True Wireless Headphones Manual

IQPODZ06

Bluetooth® v5.0

iqpodz.ca

SAFETY CAUTION

If you choose to use the iQ Podz while driving, please observe and abide by all applicable driving laws.

Please keep all the equipment and accessories away from small children or animals as the small pieces may cause choking if swallowed.

Please refrain from using the product in extreme temperature environments (*Below - 20 degrees centigrade or above 45 degrees centigrade*)

Extreme temperatures can reduce the charging capacity of the device, and shorten the battery life.

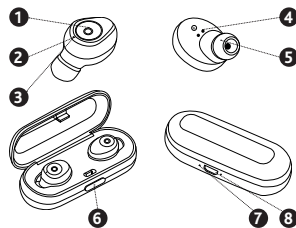
Do not use abrasive cleaning solvents to clean the Podz.

Do not allow the Podz near sharp objects as this will cause scratching and damages.

Exposure to heavy rainfall or other moisture can severely damage the product. Submersion of the product in liquid will likely cause irreversible damage to the Podz.

Please use caution when listening to media at high volume for long periods of time as it can cause damage to your hearing over time.

APPEARANCE



- 1 - Main Button
- 2 - Charging Indicator
- 3 - Microphone
- 4 - Charging Pins
- 5 - Ear Tips
- 6 - Charging Case
- 7 - Case Charging Indicator
- 8 - Micro USB Charging Port

WEARING THE PODZ

Remove the Podz from the charging case and identify the

Right **R** and Left **L** sides by looking for the icons on the Podz. This indicates which ear you wear the Podz in.

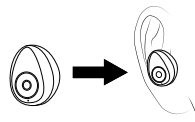


R Right Podz



L Left Podz

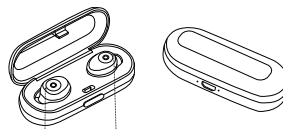
Place the **R** Podz in your right ear and the **L** Podz in your left ear.



Gently adjust the Podz until they are firmly in place.

CHARGING THE PODZ

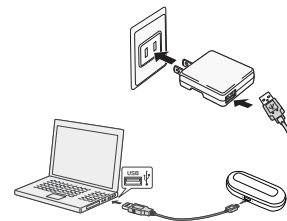
Place both Podz into the Charging Case. The Podz Charging Indicators will light up red when being charged and will turn off automatically after it is fully charged.



Podz Charging Indicators

CHARGING THE CASE

Use the included Micro USB charging cable and connect the

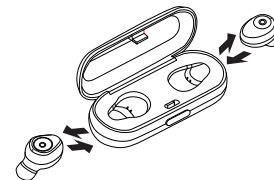


Important Notes:

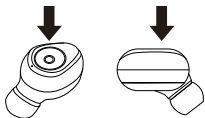
- Please use the supplied Micro USB cable to charge this device. Using a third party cable may cause damage to the device.
- Do not attempt to force open the built-in battery as this could damage the device.
- A fully charged device will lose its power automatically if left unused. It is recommended to charge the device after periods of unused.

BLUETOOTH PAIRING

1. Take the Podz out of the charging case. They will Power On and enter auto pairing mode. The **R** Podz indicator will alternately flash red and blue, signifying that the Podz are ready to be paired with a Bluetooth device.

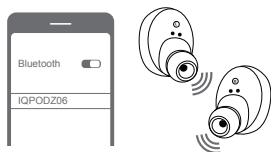


Note: If the Podz are in an OFF state, press and hold the Main Button on the **R** and **L** Podz for 2 seconds to Power On. The Podz will automatically enter pairing mode.



2. Go to the Bluetooth connection list on your smart phone or tablet and search for "IQPODZ06" Bluetooth name. Click to connect. Once connected, a voice prompted will say, "Connected" indicating that the Podz are connected to the Bluetooth device.

Note: Once the Podz have been paired with a Bluetooth device they will automatically connect to that same device when they are Powered on in the future.



MAIN BUTTON FUNCTIONS

Power ON: Press and hold Main Button on the **R** and **L** Podz for 2 seconds to Power On.

Power OFF: Press and hold Main Button on the **R** and **L** Podz for 5 seconds to Power Off.

Music Play/Pause: Press the Main Button on the **R** or **L** Podz to play or pause music or videos.

Music Next/Previous: Double press the Main Button on the **R** Podz to go to the next song. Double press the Main Button on the **L** Podz to go to previous song.

Volume +/-: Triple press the Main Button on the **R** Podz to increase the volume. Triple press the Main Button on the **L** Podz to decrease the volume.

Answer Call: Press the Main Button on the **R** or **L** Podz to answer an incoming call.

End Call: Press the Main Button on the **R** or **L** Podz to end a call. Once the call has ended, you will hear 'Call Ended' in the **R** Podz.

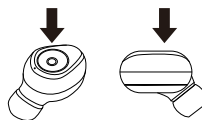
Refuse Call: Press and hold the Main Button on the **R** or **L** Podz for 2 seconds to refuse a call. Once the call has been rejected, you will hear 'Call Reject' in the **R** Podz.

Google Assistant/Siri: When in standby mode or music playing mode long press the Main Button on the **R** or **L** Podz.

This will activate Voice Dial on your smart phone.

Note: This feature only supports smart phones with Google Assistant or Siri functions.

Deleting Pairing Records/Reset: In OFF mode press and hold the Main Button on the **R** and **L** Podz for 10 seconds until the indicator light flashes.



SPECIFICATIONS

Bluetooth	V5.0
Operation Range	Up to 10 meters
Frequency Range	2.4GHz-2.48GHz
Battery of Podz	50Mah Li-polymer Battery
Charging Voltage of Podz	DC 5±0.25V
Charging Time of Podz	1.5 hours
Battery of Case	450Mah Li-polymer Battery
Charging Voltage of Case	DC 5±0.25V
Charging Time of Case	1.5 hours
Music Playing Time	Up to 3 hours
Calling Talk Time	Up to 3 hours
Standby Time	Up to 100 hours

TROUBLE SHOOTING

Podz are not turning on or turning off automatically
Charge the Podz for 1-2 hours. Your battery may be low.

Podz aren't turning on when I remove them from the case
Charge the case and the Podz for 1-2 hours. Your battery may be low.

There is no sound after I paired my Podz

Try re-pairing your Bluetooth device to the Podz. Your Podz may not have paired correctly.

The **R or **L** Podz are not auto pairing when Powered On**

If the Podz fail to auto pair with each other, Deleting Pairing Records. You may have too many pairing records stored.

Charging base indicator is not turning on when charging
Check that the Micro USB Cable is firmly plugged in.

CUSTOMER SERVICE

For more information or service contact Customer Service Department.

Email: iqpodz@gentec-intl.com or **Phone:** 905-513-7733

Visit iqpodz.ca for easy pairing videos and more information.